
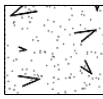





LEGEND

INITIAL

CABINET CONSTRUCTION:	EGGER - BEIGE TEXTILE		
COUNTERTOP:	STONE COUNTERTOP BY OTHERS		
DRAWER CONSTRUCTION:	EGGER - BEIGE TEXTILE		
DRAWER SLIDES:	UNDERMOUNT SOFT CLOSING SLIDES		
INTERIOR FINISH:	EGGER - BEIGE TEXTILE		
EXTERIOR FINISH 1:	HIGH GLOSS FINISH (COLOR TBD)		
DOOR STYLE:	1" FLAT SLAB WITH INTEGRATED FINGER PULLS & SOFT CLOSING HINGES		
HANDLES:	INTEGRATED FINGER PULL		
HINGES:	CONCEALED SOFT CLOSING HINGES		
LIGHTS:		
APPLIANCES:	SPECS REFERENCED		
FIELD DIMENSIONS:	FILD DIMENSIONS REQUIRED		
MISCELLANEOUS:			

MADISON MILLWORK & CABINET CO., INC.

EMAIL: glenn@madisonmillwork.net

PHONE: (954) 966-7551

FAX: (954) 966-0805

PROJECT NAME: GLIKIN RESIDENCE

CLIENT: WESTHAVEN CONSTRUCTION SERVICES

PHONE #

E MAIL:

DELIVERY DATE:

INSTALLATION TIME FRAME:

DRAWING DATES:

INITIAL

PROJECT ADDRESS:

DRWG#GN061523-1300

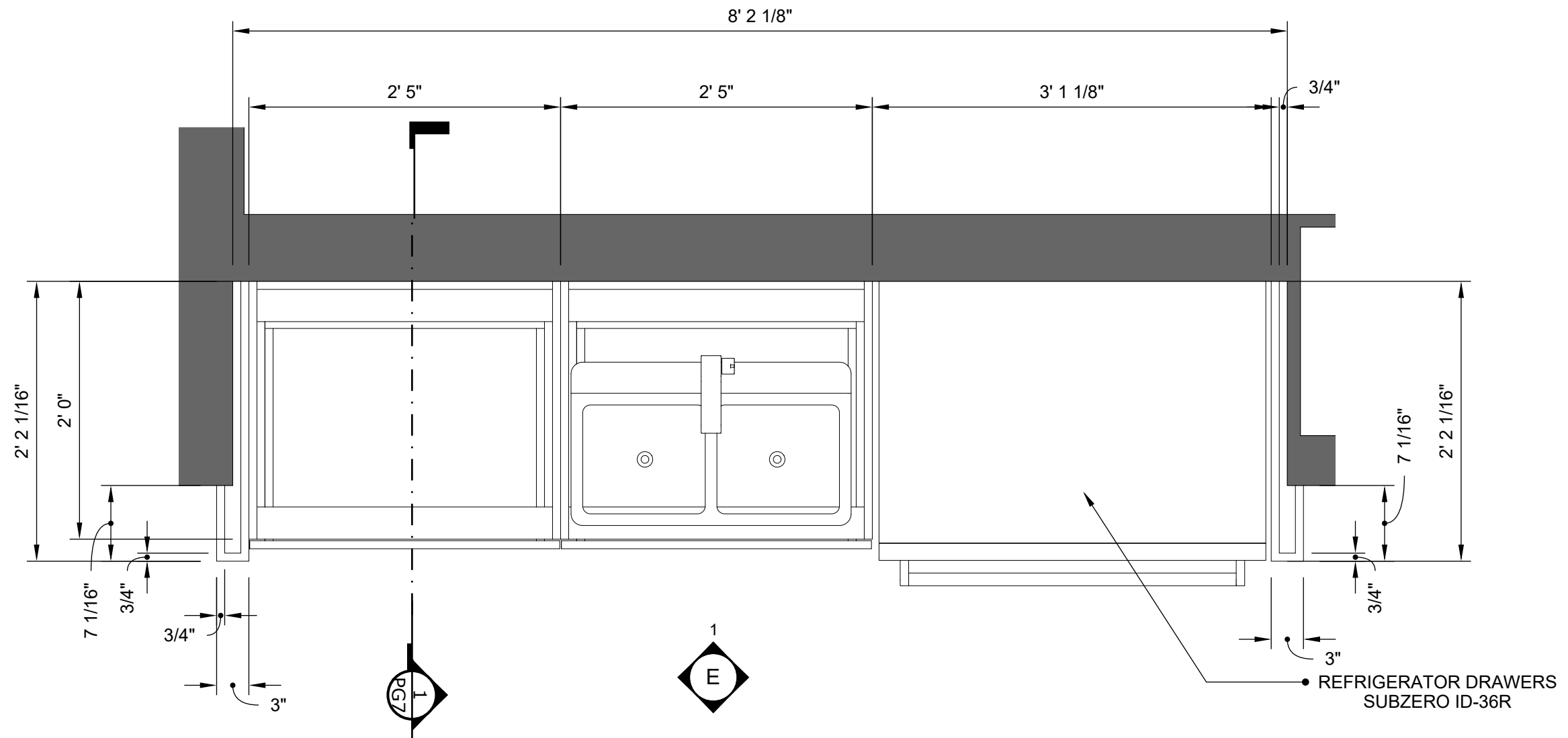
SIGNATURE OF APPROVAL:

DATE OF APPROVAL:

(1171)

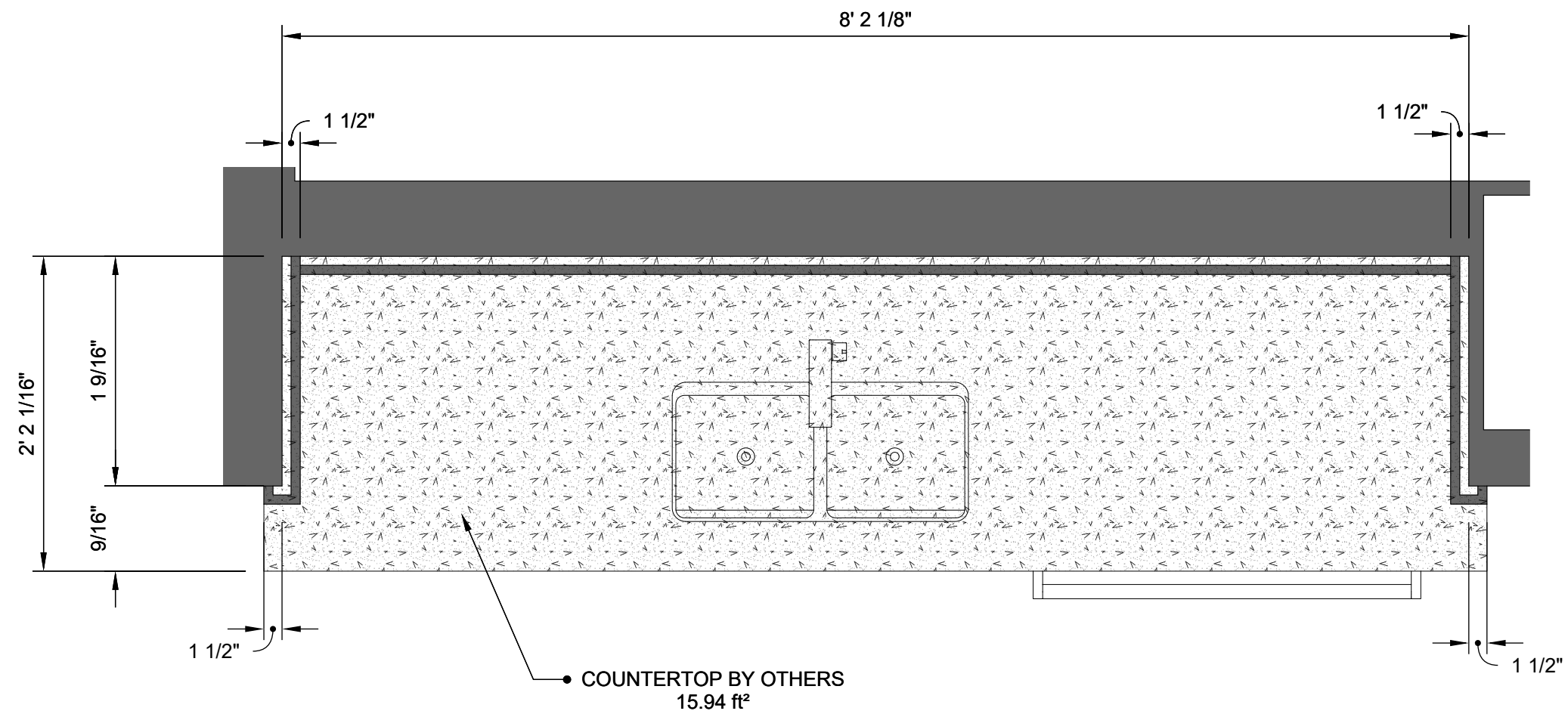
BAR

(02162C-02)



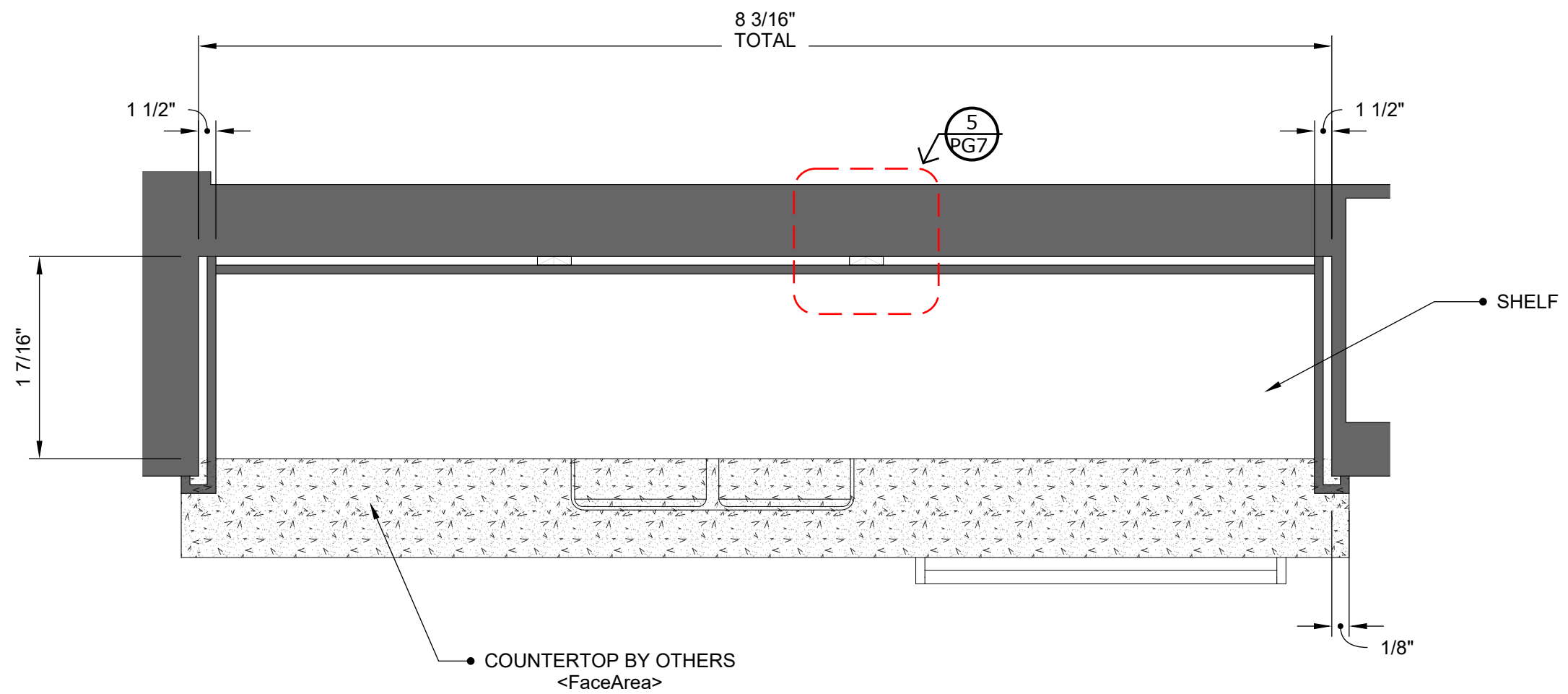
PLAN VIEW - BASE CABINETS (LEVEL - 1)

GLIKIN- BAR (02162C-02)



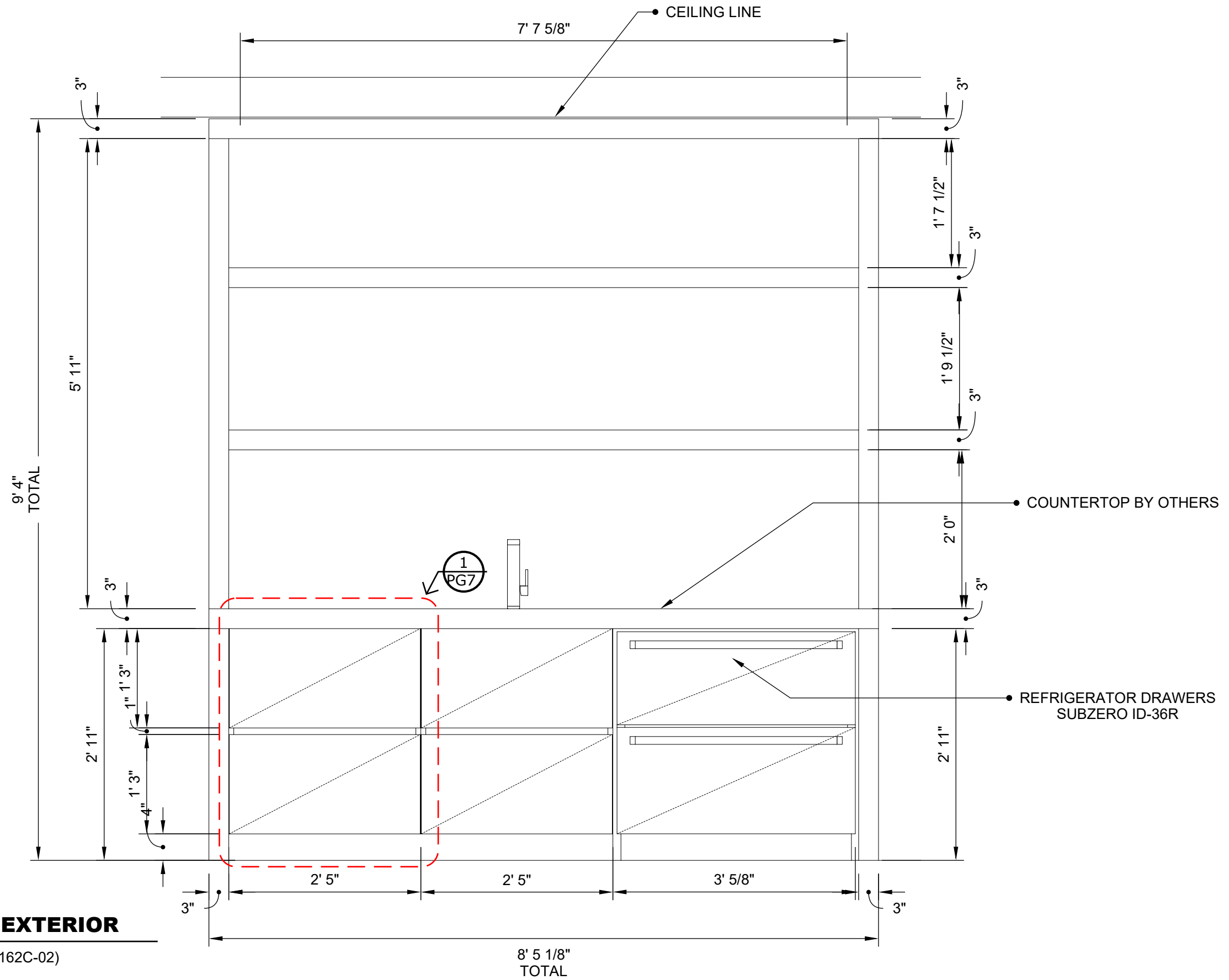
PLAN VIEW - COUNTERTOP BY OTHERS (LEVEL - 2)

GLIKIN-BAR (02162C-02)



PLAN VIEW - SHELF (LEVEL - 2)

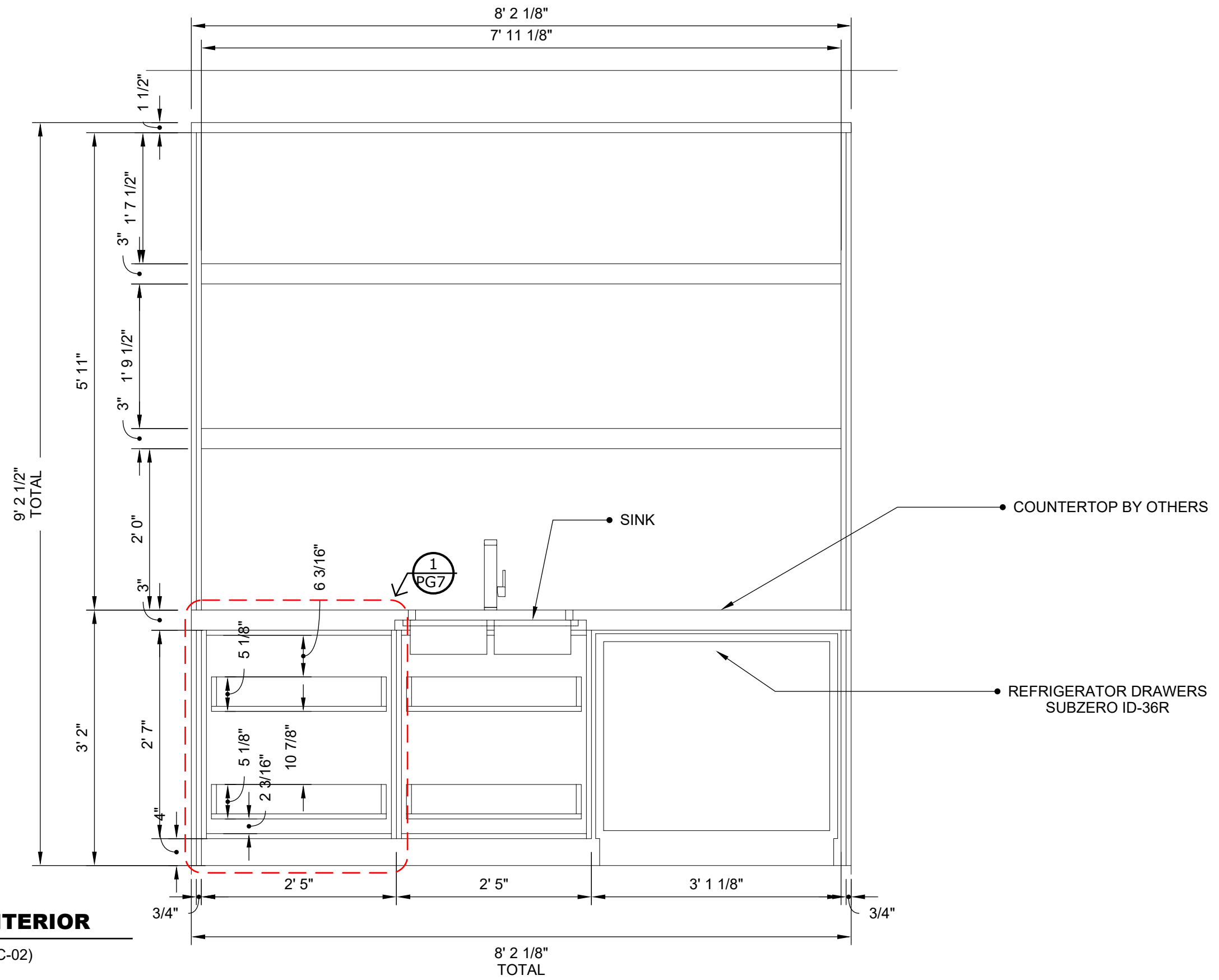
GLIKIN- BAR (02162C-02)



ELEVATION - 1 - EXTERIOR

GLIKIN- BAR (02162C-02)

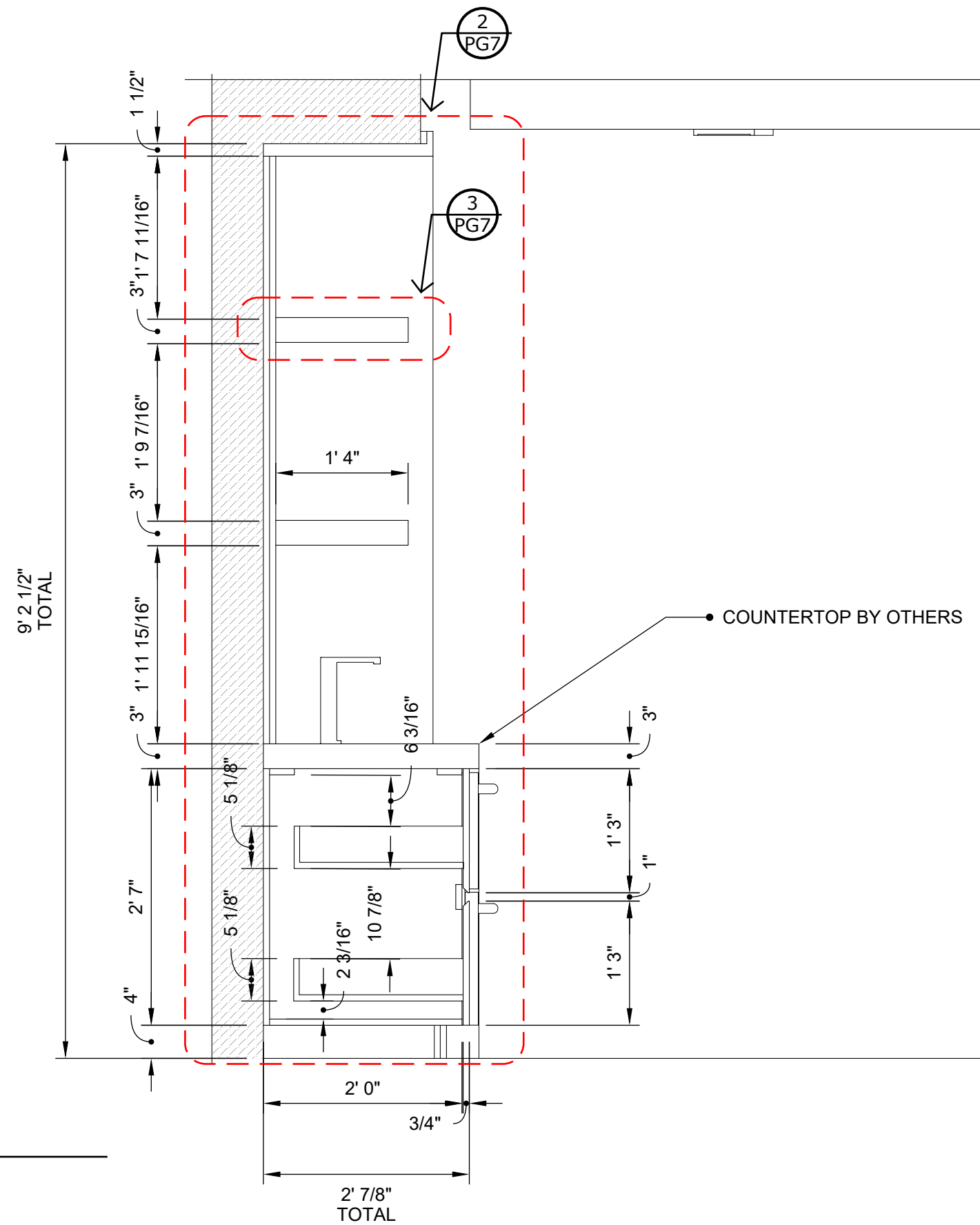
8' 5 1/8"
TOTAL



ELEVATION - 1 - INTERIOR

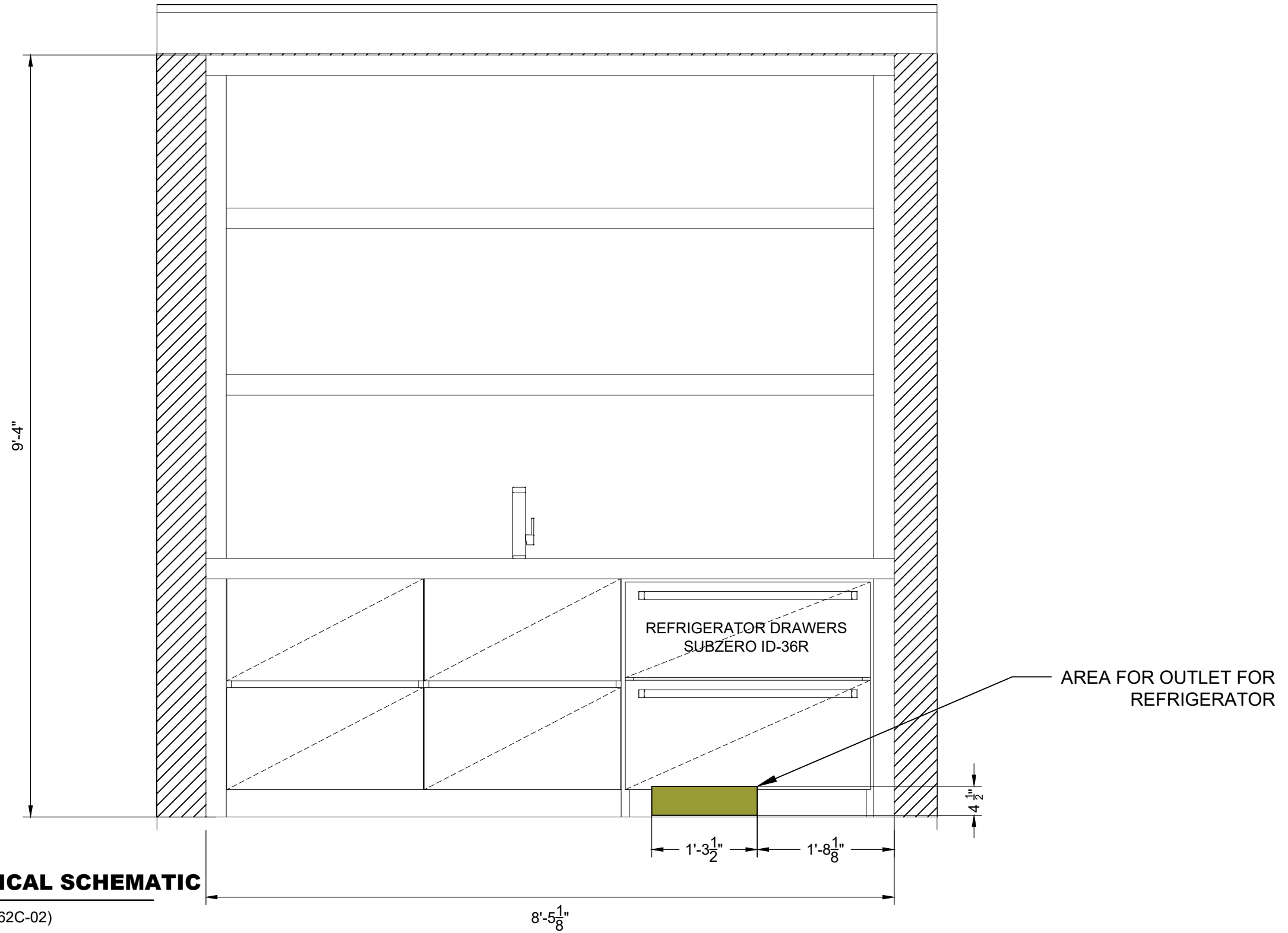
GLIKIN- BAR (02162C-02)

8' 2 1/8"
TOTAL



SIDE SECTION - 1

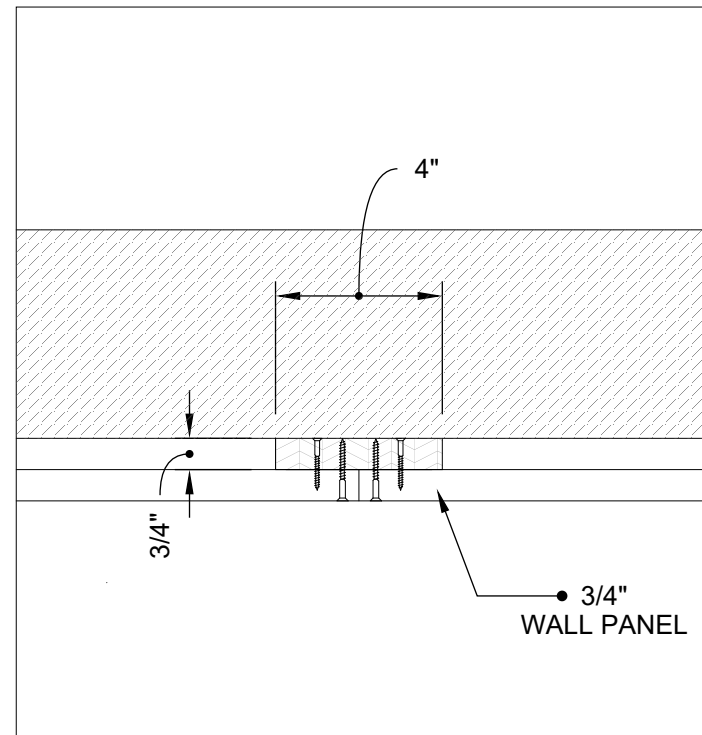
GLIKIN- BAR (02162C-02)



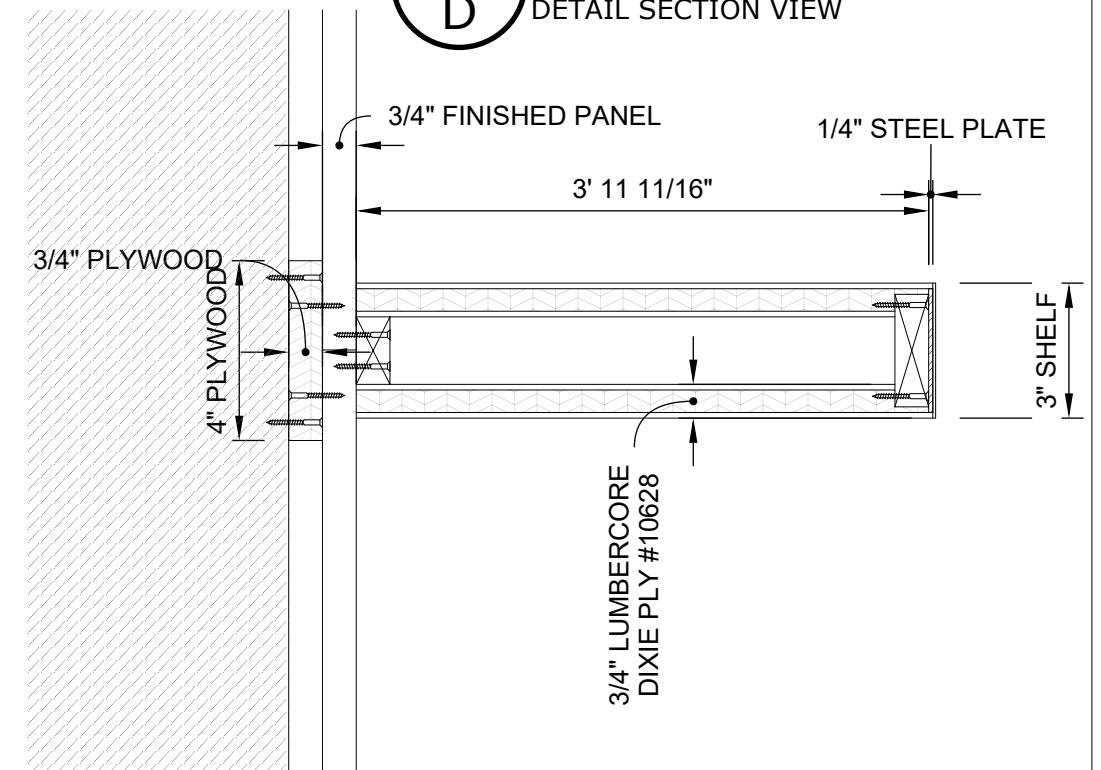
ELEVATION - 1 - ELECTRICAL SCHEMATIC

GLIKIN- BAR (02162C-02)

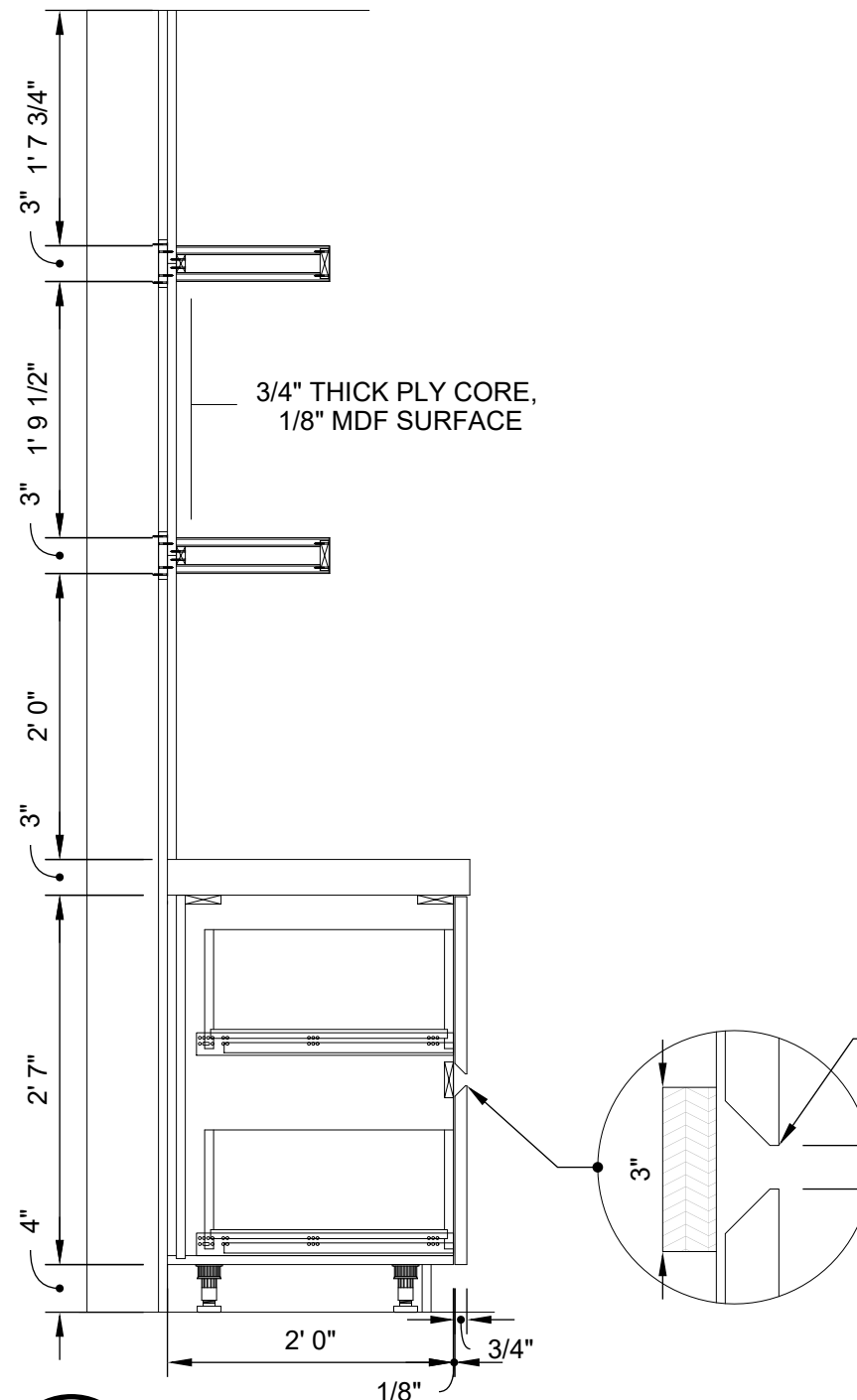
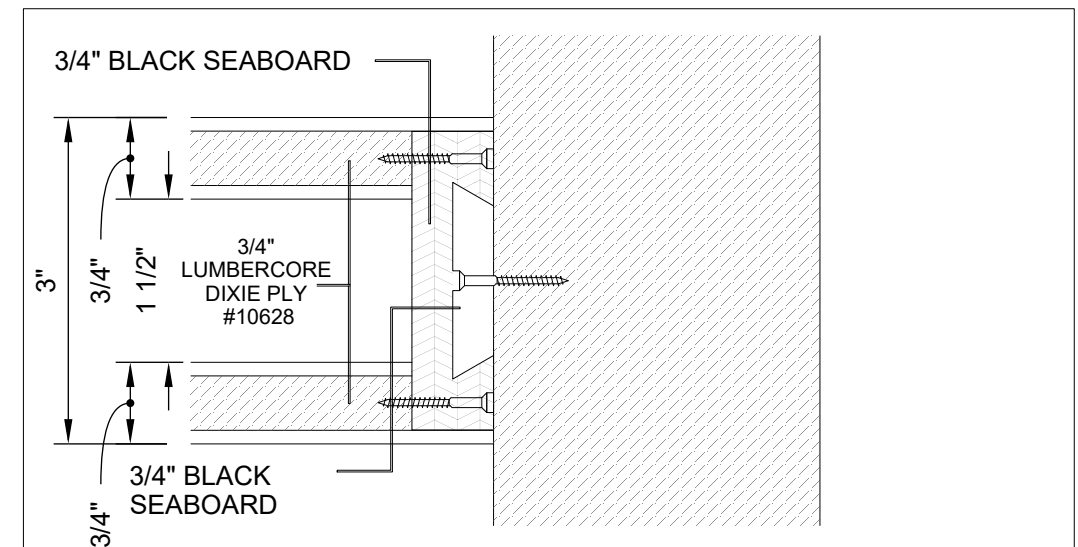
E WALL PANEL BRACKET
5 PLAN VIEW



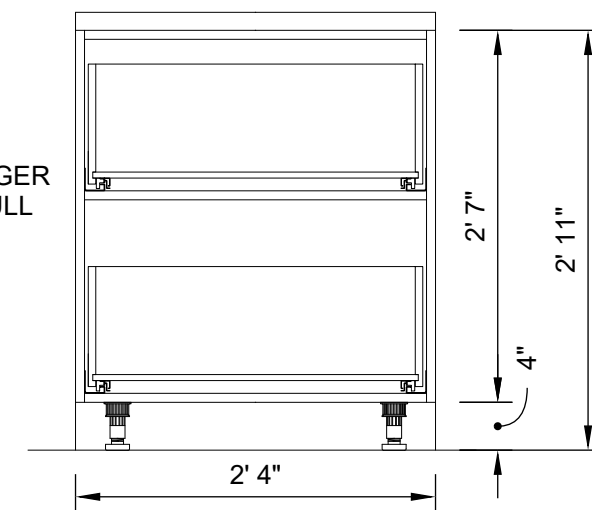
4 SHELVES
D DETAIL SECTION VIEW



2 SHELF BRACKET DETAIL
B FRONT VIEW



3 SIDE SECTION VIEW
C



1 BASE DRAWER UNIT
A INTERIOR VIEW

DETAILS



RENDERS - 3D VIEWS

GLIKIN- BAR (02162C-02)

