

2400 WESTHAVEN OFFICE

OFFICE STAIR

This plan presents preliminary proposals for materials, measurements, and design. Please note that these proposals are subject to possible changes.

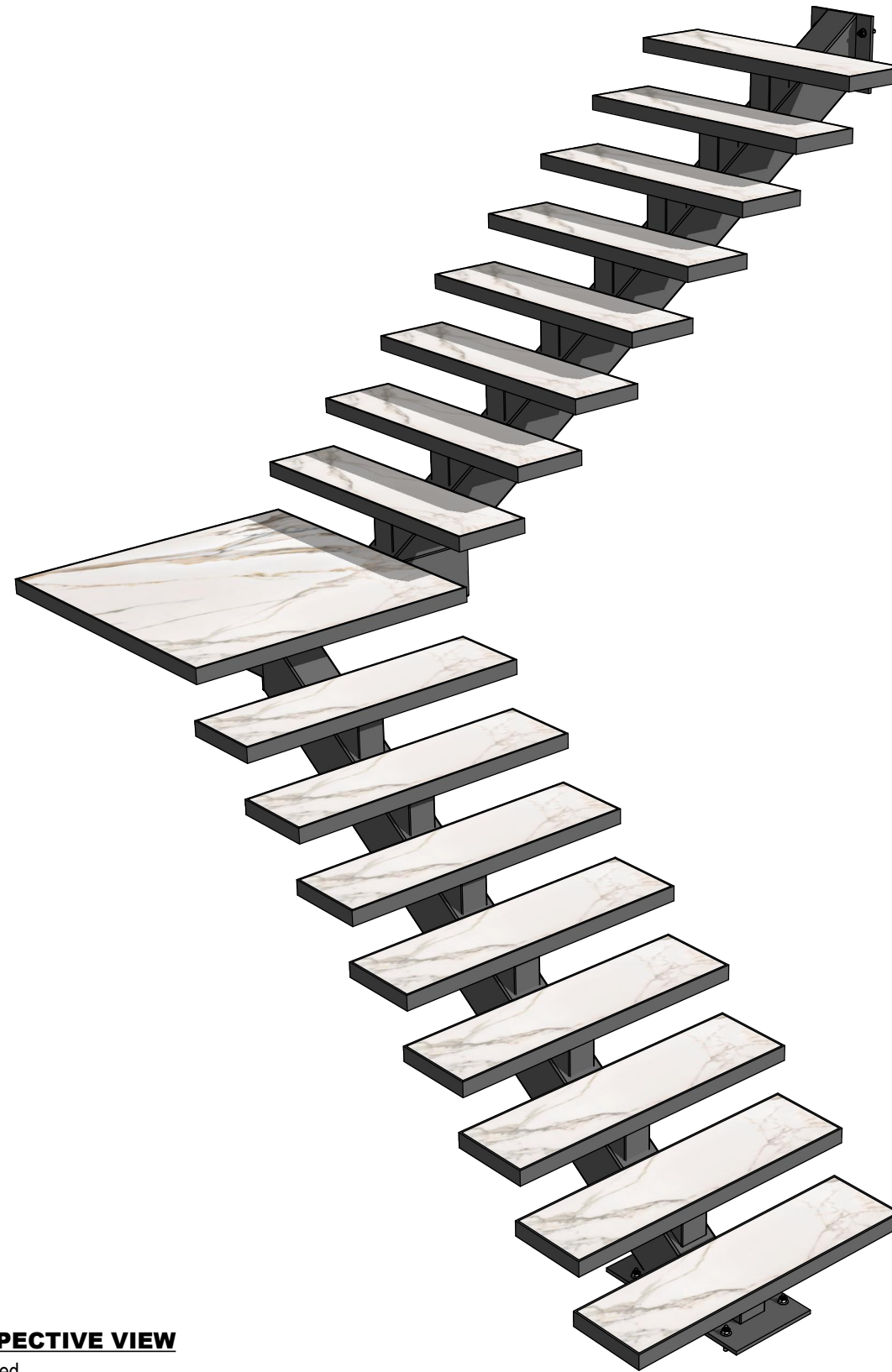
Materials: Proposed materials are subject to evaluation and final selection.

Measurements: Indicated measurements are approximate and may be adjusted during the design and construction process.

Design: The presented design is an initial proposal and may undergo modifications.

Approvals and revisions: Any changes to materials, measurements, or design require appropriate approval.

This plan does not represent the final version of the project, and adjustments will be made to ensure quality and goal fulfillment.



PERSPECTIVE VIEW
Not Scaled



DESIGN CONCEPT

**ALL MEASUREMENTS
MUST BE
VERIFIED IN FIELD**

DISCARD ALL DRAWINGS THAT
WERE MADE ON THIS ITEM PRIOR
TO THE DATE BELOW:

09/20/2024

This drawing is not intended to be used
for contract pricing or fabrication
purposes.
All content is subject to change



WESTHAVEN
CONSTRUCTION SERVICES, INC.

2400 W 84th St Unit # 20,
Hialeah, FL 33016
Ph. 305 556 1416
www.westhavencon.com

**PROGRESS DRAWING
FOR APPROVAL**



CONTACT DESIGN TEAM

2400 WESTHAVEN OFFICE
0000 Fl., 33000

ISSUE 09/ 18/ 2024
RE - ISSUE 09/20/2024
OWNER WESTHAVEN
DESIGN BY J. Alonso
DRAWN BY A. Quintero
PAGE NAME PAGE No 1

DESIGN CONCEPT

**ALL MEASUREMENTS
MUST BE
VERIFIED IN FIELD**

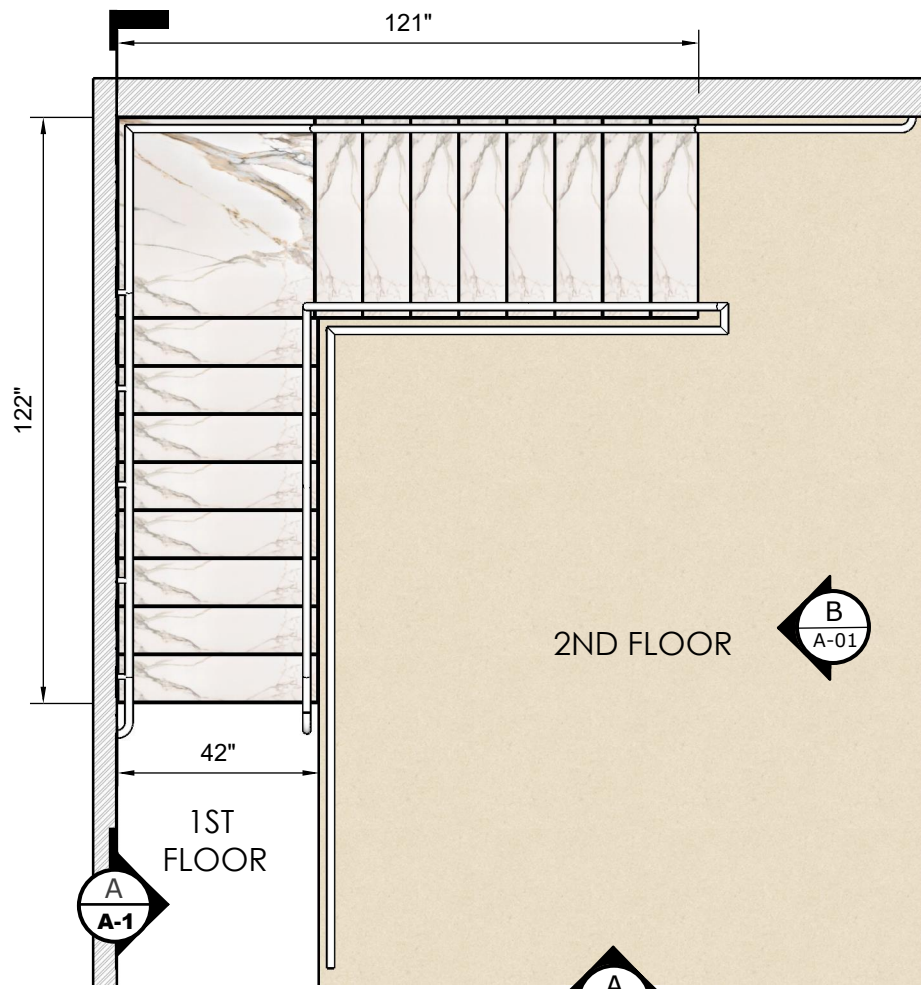
DISCARD ALL DRAWINGS THAT
WERE MADE ON THIS ITEM PRIOR
TO THE DATE BELOW:

09/20/2024

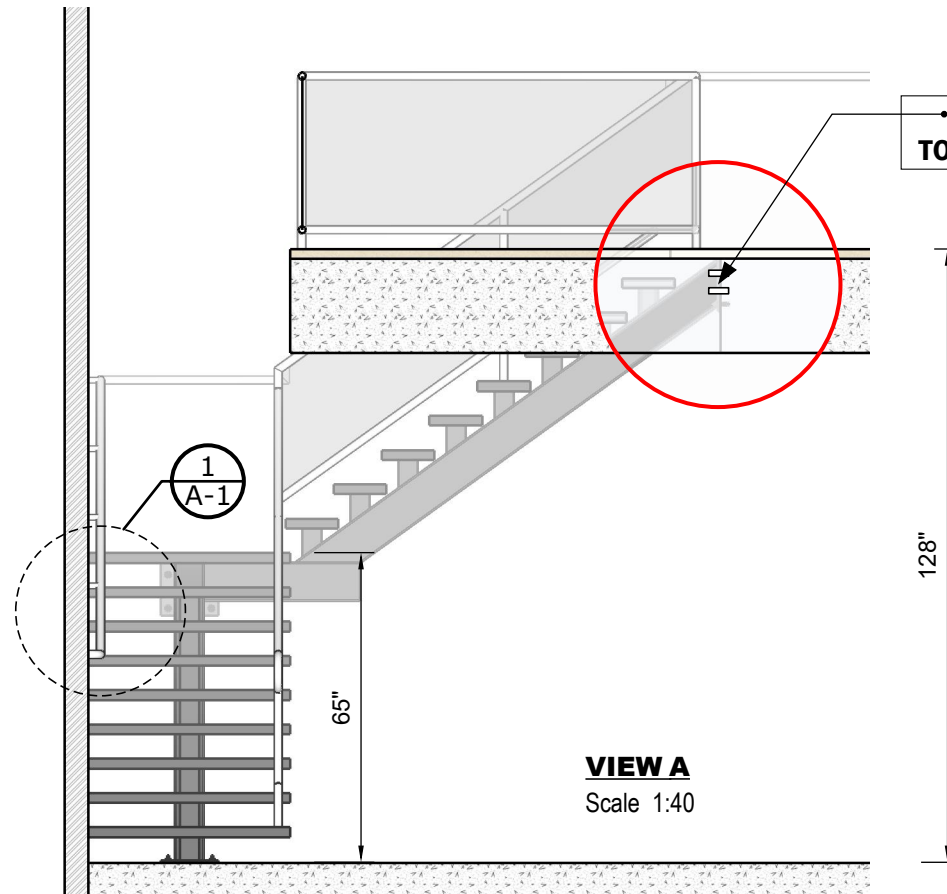
This drawing is not intended to be used
for contract pricing or fabrication
purposes.
All content is subject to change

A - 01

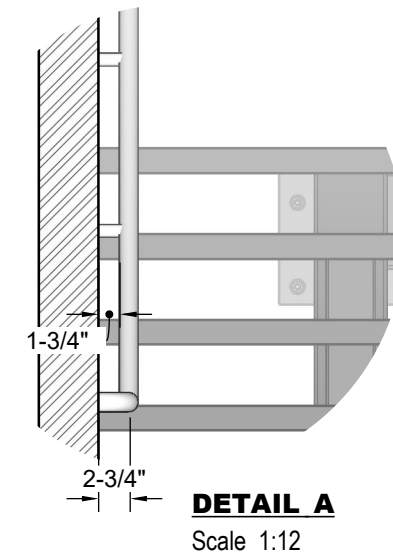
OFFICE STAIR



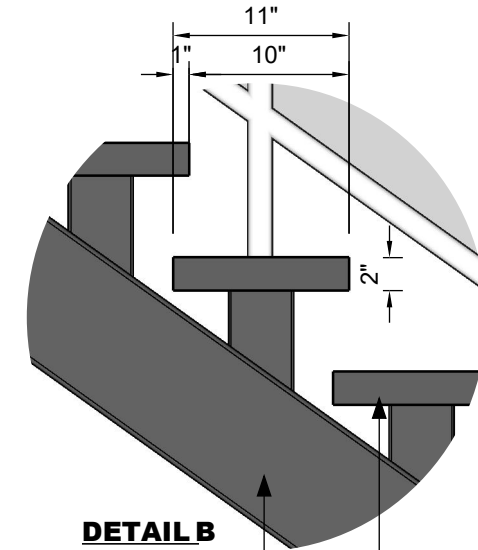
TOP VIEW
Scale 1:40



VIEW A
Scale 1:40



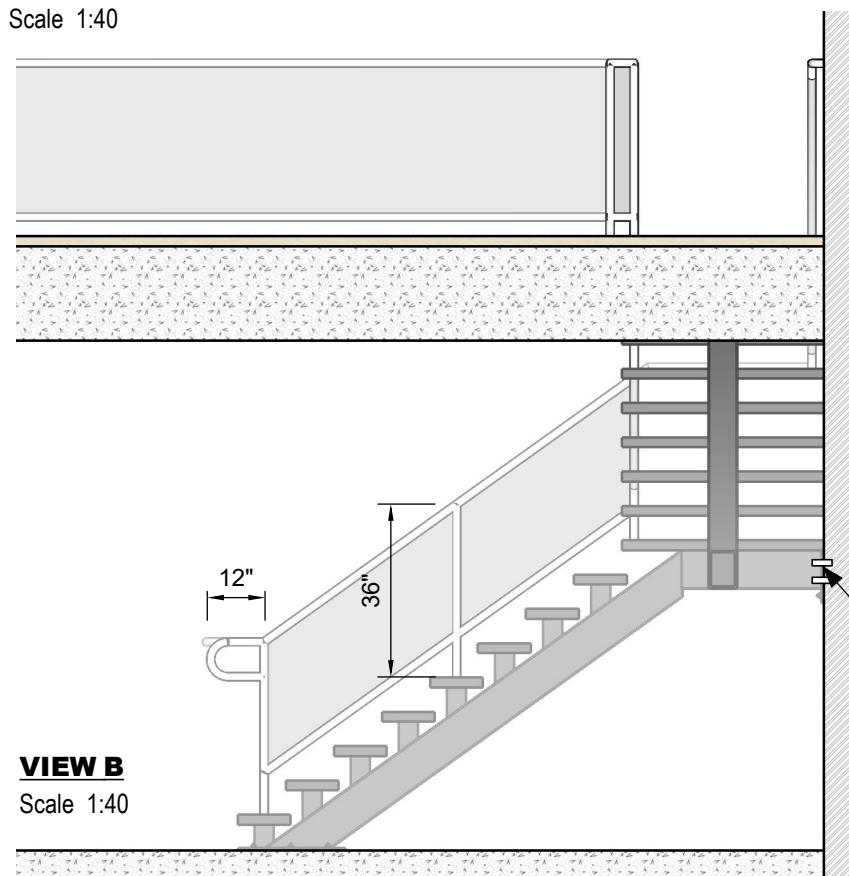
DETAIL A
Scale 1:12



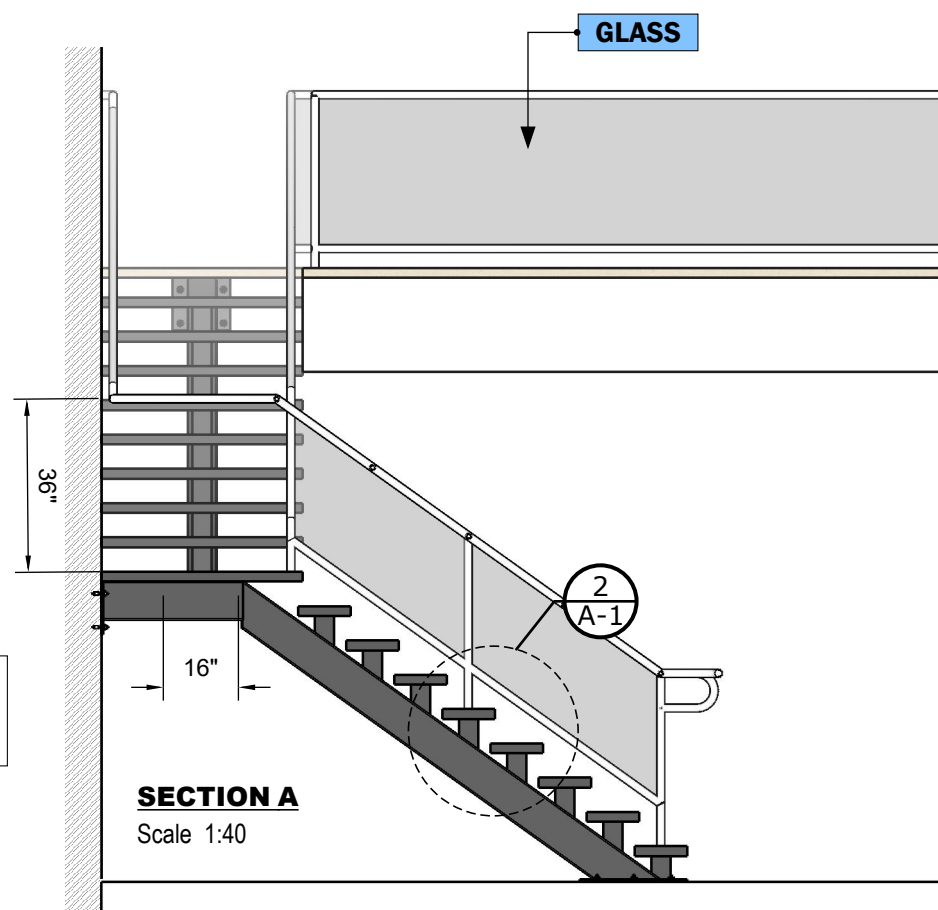
DETAIL B
Scale 1:12

6"x8" METAL BEAM

METAL STEP



VIEW B
Scale 1:40



SECTION A
Scale 1:40

NOTE

Drawings may not be scaled.

The numerical dimensions represent correct measurements. (If not indicated, the precision of the dimensions by default is to 1")

All design ideas, drawings and plans represented here are owned by the property of WESTHAVEN CONSTRUCTION SERVICES, INC. All rights reserved. Above suggested electrical and plumbing locations, must be verified in field.



WESTHAVEN
CONSTRUCTION SERVICES, INC.

2400 W 84th St Unit # 20,
Hialeah, FL 33016
Ph. 305 556 1416
www.westhavencn.com

**PROGRESS DRAWING
FOR APPROVAL**



CONTACT DESIGN TEAM

2400 WESTHAVEN OFFICE
0000 Fl., 33000

ISSUE
09/ 18/ 2024
RE - ISSUE
09/20/2024

OWNER
WESTHAVEN
DESIGN BY
J. Alonso
DRAWN BY
A. Quintero
PAGE NAME
STRUCTURE

DESIGN CONCEPT

**ALL MEASUREMENTS
MUST BE
VERIFIED IN FIELD**

DISCARD ALL DRAWINGS THAT
WERE MADE ON THIS ITEM PRIOR
TO THE DATE BELOW:

09/20/2024

This drawing is not intended to be used
for contract pricing or fabrication
purposes.
All content is subject to change

A - 02

OFFICE STAIR

