

INTERIOR REMODELING & ALTERATION LEVEL 2
FLORIDA BUILDING CODE 2023 8th EDITION

LEGEND

- PROP. NEW SQUARE SUPPLY DUCT
- PROP. NEW ROUND SUPPLY DUCT
- PROP. NEW R/A PLENUM

NOTES:

- AT THESE REMODELING/RENOVATION WORK, THE WORKING DRAWINGS ARE CONSIDERED AS A GUIDE AND HAVE TO BE VERIFY AT FIELD, AS PER EXISTING CONDITIONS.
- IF ANY DISCREPANCIES OCCUR BETWEEN EXISTING CONDITIONS, CONSTRUCTION DRAWINGS AND/OR DESIGN CONSULTANT DRAWINGS, THE CONTRACTOR NOTIFY TO ENGINEERS AND DESIGN CONSULTANT FOR DIRECTION PRIOR TO COMMENCING ANY WORK.

AIR DISTRIBUTION SCHEDULE					
MARK	USE	TYPE	ACCESSORIES	NECK SIZE CFM RANGE	MANUFACTURER MODEL NUMBER
(A)	SUPPLY	(2)1" SLOT LINEAR SLOT DIFFUSER	O.B.D. W/ YOUNG REGULATOR CONTROL PROVIDED INSULATED BOOT PLENUM.	SEE DRAWINGS	T&B Tuttle & Bailey
(B)	RETURN	CONVENTIONAL DIFFUSER	INSULATED PLENUM.	SEE DRAWINGS	CONVENTIONAL GRILLE

NOTES:
1.- CONTRACTOR SHALL COORDINATE AIR DISTRIBUTION DEVICES TYPE & LOCATION WITH CEILING TYPES & ARRANGEMENT PRIOR TO ORDERING AND INSTALLATION OF DEVICES.
2.- BASIS OF DESIGN IS T&B OR APPROVED EQUALS: TITUS, PRICE OR KRUGER.

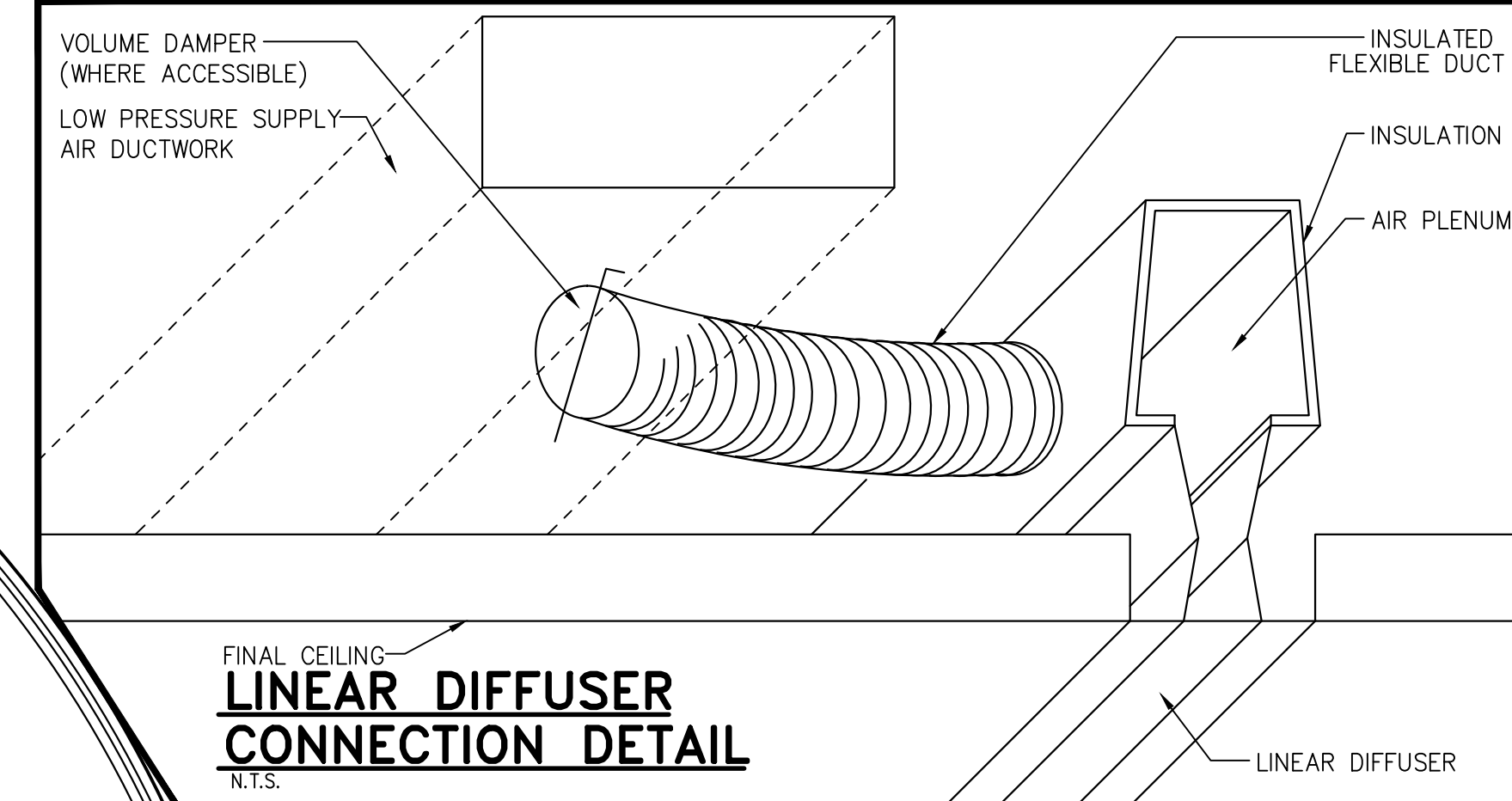
SCOPE OF WORK MECHANICAL
INTERIOR REMODELING & ALTERATION LEVEL 2
FLORIDA BUILDING CODE 2023 8th EDITION

-ALL AC DUCT WORK ARE NEW EXCEPT THE MACHINES.
-AHU HP-1 ARE EXISTING TO REMAIN AT SAME LOCATION.
-AHU HP-2 ARE EXISTING TO REMAIN AT SAME LOCATION.
-AHU HP-3 ARE EXISTING TO REMAIN AT SAME LOCATION.
-ALL SUPPLY AND RETURN GRILLES WILL BE NEW.
-ALL THE EXHAUST DUCTS FOR POWDER, LAUNDRY DRYER AND ALL BATHS ARE NEW AS PER NEW LAYOUT.

EXISTING AIR-CONDITIONING AHU-1
FHP Model EM060-1VTC
5.0 TON. HEAT PUMP SYSTEM
120-240/1/60
INDOOR CFM = 1800
CAP. = 48.0 Kbtu/hr.
FUSE/CIRCUIT BREAKER SIZE: 45 A.
LISTED HEAT PUMP
COOLING: A27 - W30/W15/B25 - 18/19/18 KW.
HEATING: A20 - W20/W10/B0 - 23/18/14 KW.

EXISTING AIR-CONDITIONING AHU-2
CLIMATEMASTER Model TCV042AGC30CWTS
3.5 TON. HEAT PUMP SYSTEM
120-240/1/60
INDOOR CFM = 1200
CAP. = 36.0 Kbtu/hr.
FUSE/CIRCUIT BREAKER SIZE: 35 A.
LISTED HEAT PUMP
COOLING: A27 - W30/W15/B25 - 12/13/12 KW.
HEATING: A20 - W20/W10/B0 - 15/13/10 KW.

EXISTING AIR-CONDITIONING AHU-3
FHP Model EM060-1VTC
5.0 TON. HEAT PUMP SYSTEM
120-240/1/60
INDOOR CFM = 1800
CAP. = 48.0 Kbtu/hr.
FUSE/CIRCUIT BREAKER SIZE: 45 A.
LISTED HEAT PUMP
COOLING: A27 - W30/W15/B25 - 18/19/18 KW.
HEATING: A20 - W20/W10/B0 - 23/18/14 KW.



DUCTWORK SPECIFICATIONS:

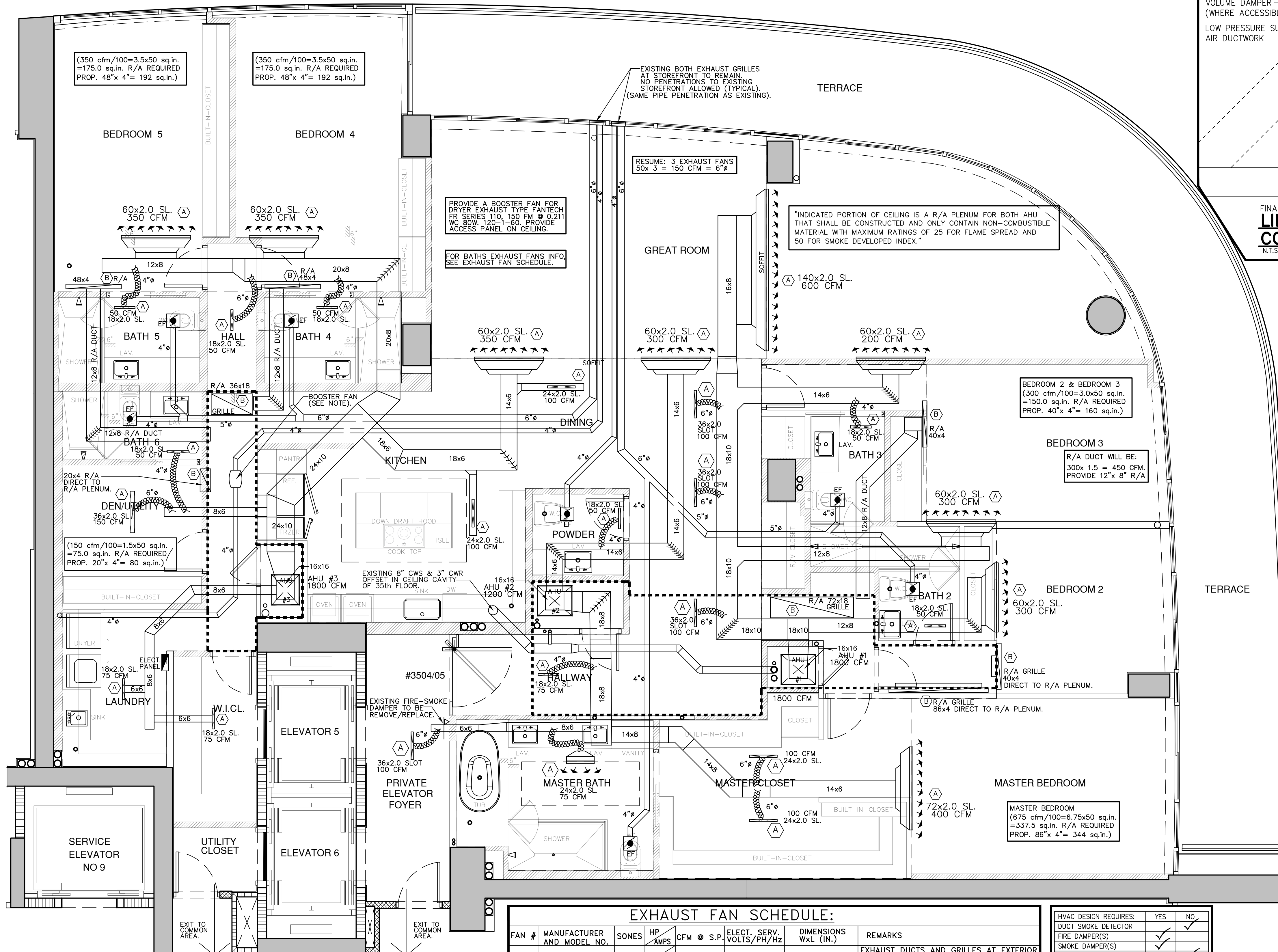
GENERAL. ALL DUCT SIZES SHOWN ARE CLEAR INSIDE DIMENSIONS. DUCT DIMENSIONS ARE IN INCHES AND CORRESPOND TO INSIDE DIMENSIONS WIDTH X HEIGHT. DUCT SYSTEM SHALL COMPLY WITH "NFPA" STANDARD NO. 90A AND/OR 90B. DUCTWORK AND COMPONENTS SHALL BE CLASS 1 MATERIALS IN ACCORDANCE WITH U.L. 18 TESTS. INSULATION WILL BE R6, AS PER EXISTING.

MATERIAL. DUCTWORK SHALL BE 1-1/2" THICK (R-6), 3 POUNDS PER CUBIC FOOT DENSITY FIBERGLASS WITH VAPOR BARRIER, UNLESS OTHERWISE SPECIFIED. DUCTWORK SHALL BE FABRICATED AND INSTALLED IN ACCORDANCE WITH MANUFACTURER'S SPECIFICATIONS AND ACCORDING TO "SMACNA'S, LOW PRESSURE DUCT. ALL DUCT JOINTS SHALL BE SEALED AND TAPED.

PROVIDE DOUBLE THICKNESS TURNING VANES AT ALL SQUARE ELBOWS. WHERE THE ELBOWS ARE RECTANGULAR INSTALL SINGLE THICKNESS INSTEAD.

PROVIDE VOLUME EXTRACTORS BEHIND EACH SUPPLY OUTLET AND AT EACH DUCT BRANCH.

EXHAUST AIR DUCTWORK SHALL BE GALVANIZED, SHEET METAL, NOT LIGHTER THAN 24 GA.



EXHAUST FAN SCHEDULE:

FAN #	MANUFACTURER AND MODEL NO.	SONES	HP AMPS	CFM @ S.P.	ELECT. SERV. VOLTS/PH/Hz	DIMENSIONS WxL (IN.)	REMARKS
EF#1	NUTONE LS-50	0.7	0.15	50 @ 0.1"	120/1/60	14 1/4x12 1/16	EXHAUST DUCTS AND GRILLES AT EXTERIOR ARE EXISTING AND WILL BE REPLACED.

NOTE: OR EQUIVALENT EQUIPMENT

HVAC DESIGN REQUIRES:

	YES	NO
DUCT SMOKE DETECTOR		<input checked="" type="checkbox"/>
FIRE DAMPER(S)	<input checked="" type="checkbox"/>	
SMOKE DAMPER(S)	<input checked="" type="checkbox"/>	
FIRE RATED ENCLOSURE	<input checked="" type="checkbox"/>	
FIRE RATED ROOF/FLOOR CEILING ASSEMBLY	<input checked="" type="checkbox"/>	
FIRE STOPPING	<input checked="" type="checkbox"/>	
SMOKE CONTROL	<input checked="" type="checkbox"/>	

Fine Line Engineers Inc.
Electrical, Mechanical, Plumbing
Fire Protection, Construction Administration
2089 W. 76th Street, Hialeah, FL 33016
Voice: 786-953-4901 Fax: 786-953-4907
E-mail: cadinfo@fineengineers.com

GEORGE FREJO, P.E.
REGISTERED ENGINEER NO. 32578
STATE OF FLORIDA C#F: 23796

DATE: _____ ONLY RIGHTS RESERVED BY THE ENGINEER



WESTHAVEN
CONSTRUCTION SERVICES, INC.
2400 W 84 Street Suite 20, Hialeah FL 33016
305-556-1416 Cell 305-979-8624

Fine Line Engineers Inc.
Electrical, Mechanical, Plumbing, Fire Protection
2089 WEST 76TH STREET, HIALEAH, FLORIDA, 33016
E-mail: mazzard@fineengineers.com

COMBINE TWO UNITS WITH RENOVATIONS AND FINISHING FOR:
CONTINUUM 3504 3505 S LLC.
100 South Pointe Drive No 3504-05, FL 33039

JOB No. 2410 ROD

STARTED: 07/24/24

COMPLETED: 08/09/24

REVISION	No.	DESCRIPTION	DATE:

M-1

CONDO/UNIT 3504-05 MECHANICAL PLAN
SCALE: 1/4" = 1'-0"

Copyright notice: These drawings, designs and ideas are the property of Westhaven Construction Services, Inc. and are protected under the copyright laws of Florida. No part thereof shall be copied, or used in connection with any work other than for the specific project for which they have been prepared without written consent of Westhaven Construction Services, Inc.