

2400 WESTHAVEN OFFICE

MAIN OFFICE WETBAR



PERSPECTIVE VIEW
Not Scaled

	FINISH	
	Monument Grey	
	Item No: U780 ST9	

	FINISH	
	Alpine White	
	Item No: W1100 ST19	



DISCLAIMER: For better visualization and spatial understanding, decorative or complementary elements are included in the renderings. These items are not necessarily part of Westhaven CN's scope of work. All items for which we are responsible will be specified in the established budget. Therefore, **this image should not be used to determine the number of items Westhaven CN is responsible for.**



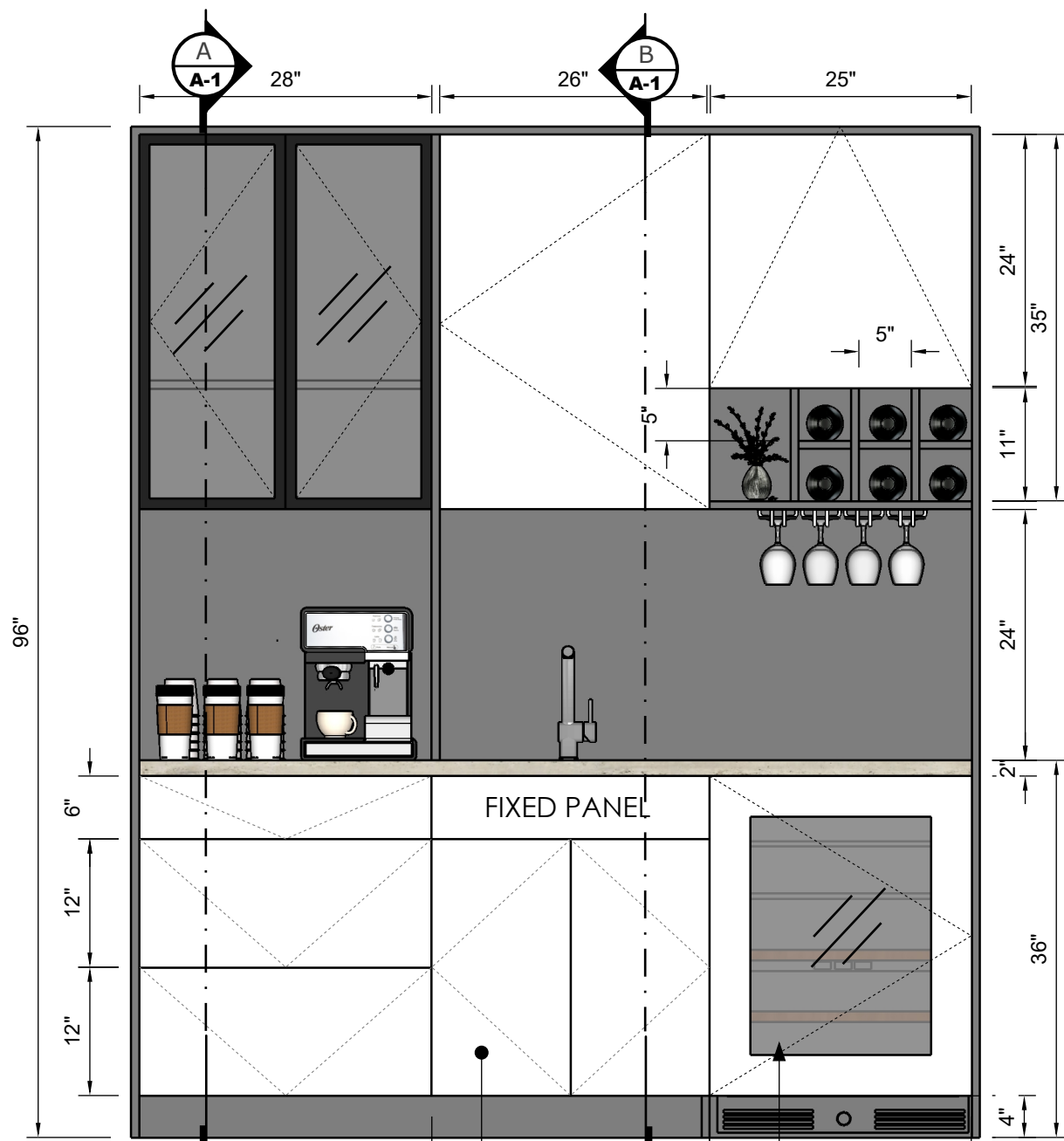
DESIGN CONCEPT

**ALL MEASUREMENTS
MUST BE
VERIFIED IN FIELD**

DISCARD ALL DRAWINGS THAT
WERE MADE ON THIS ITEM PRIOR
TO THE DATE BELOW:

12/18/2024

This drawing is not intended to be used
for contract pricing or fabrication
purposes.
All content is subject to change



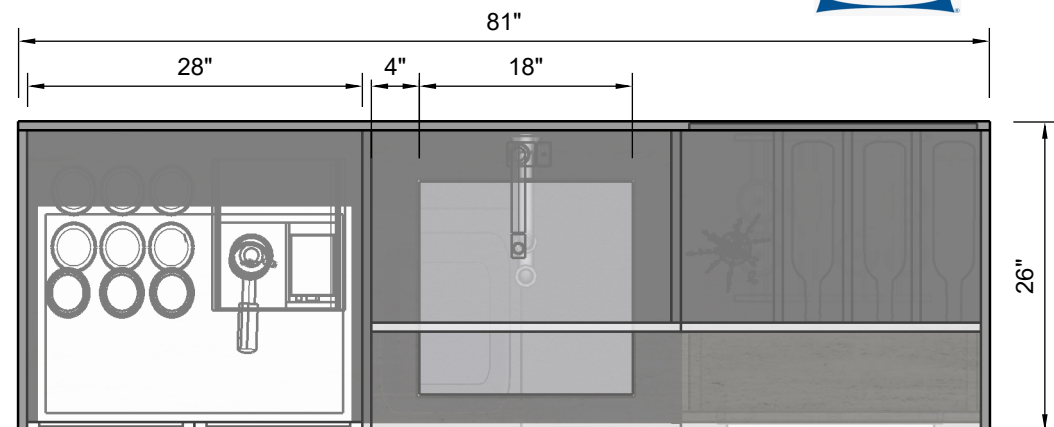
PULL OUT TRASH BIN

FRONT VIEW

Scale 1:16

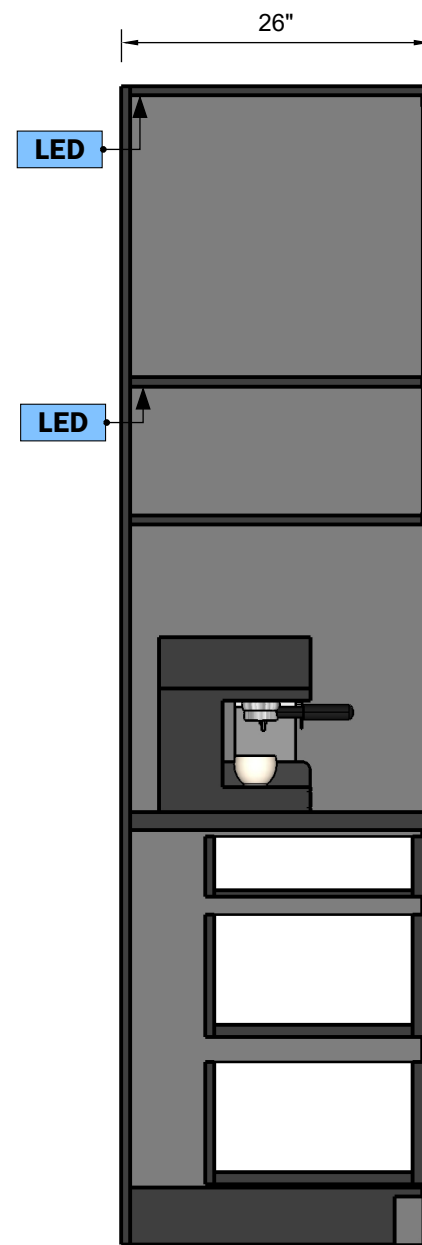
24" WINE COOLER

SUB-ZERO



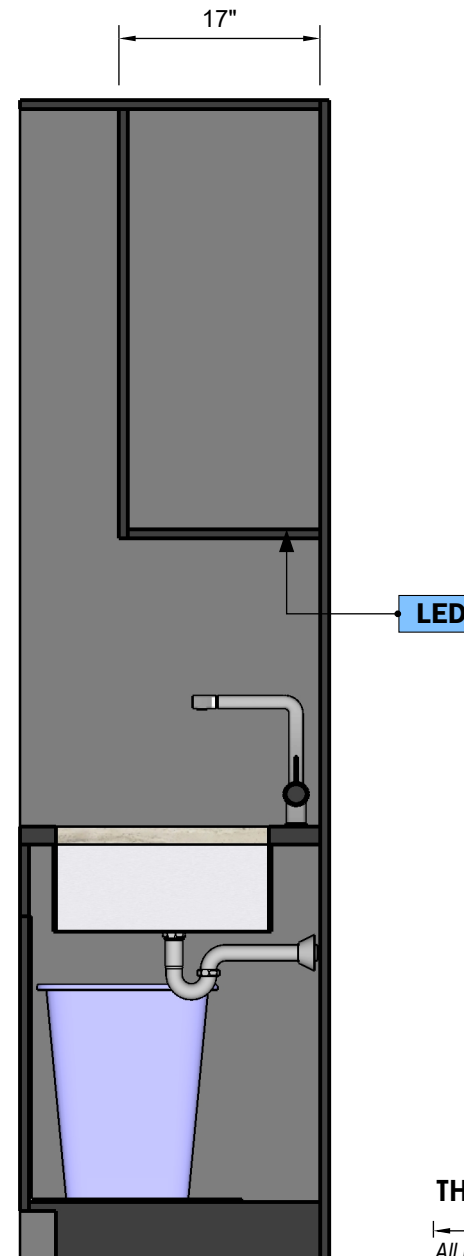
TOP VIEW

Scale 1:16



SECTION A

Scale 1:16



SECTION B

Scale 1:16

THIS IS NOT A SHOP DRAWING

All Measurements must be **VERIFIED IN FIELD**

This plan presents preliminary proposals for materials, measurements, and design. Please note that these proposals are subject to possible changes.

Materials: Proposed materials are subject to evaluation and final selection.

Measurements: Indicated measurements are approximate and may be adjusted during the design and construction process.

Design: The presented design is an initial proposal and may undergo modifications.

Approvals and revisions: Any changes to materials, measurements, or design require appropriate approval.

This plan does not represent the final version of the project, and adjustments will be made to ensure quality and goal fulfillment.

NOTE

Drawings may not be scaled.

The numerical dimensions represent correct measurements. (If not indicated, the precision of the dimensions by default is to 1")

All design ideas, drawings and plans represented here are owned by the property of WESTHAVEN CONSTRUCTION SERVICES, INC. All rights reserved. Above suggested electrical and plumbing locations, must be verified in field.



© 2024 WHCN